

UCSF

Reports on Industry Activity from Outside UCSF

Title

Results from the 2008 Florida Youth Tobacco Survey- Fact Sheet 5: Youth Exposure to Second Hand Smoke

Permalink

<https://escholarship.org/uc/item/1tj1j9md>

Author

Florida Department of Health

Publication Date

2008-02-01

Youth Exposure to Secondhand Smoke (SHS)



Results from the 2008 Florida Youth Tobacco Survey

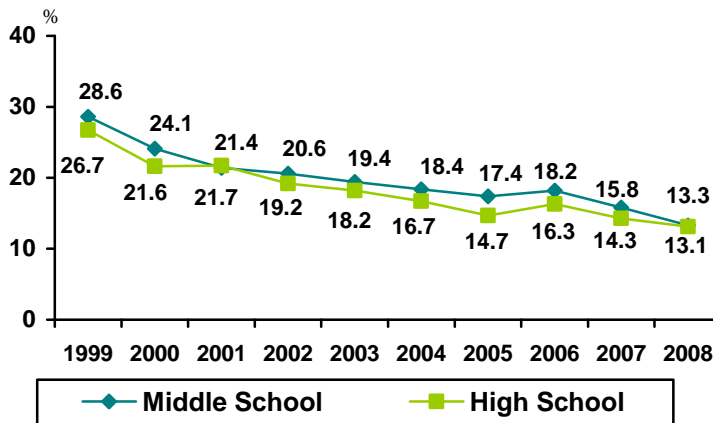
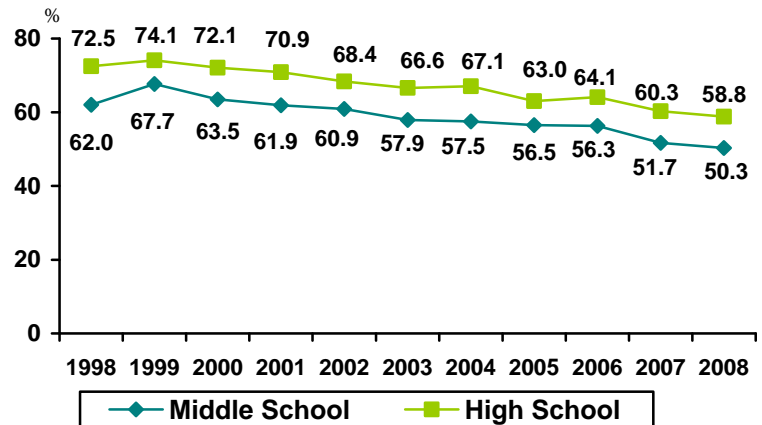
Fact Sheet 5

Introduction

The Florida Youth Tobacco Survey (FYTS) was administered in the spring of 2008 to 38,510 middle school students and 40,283 high school students in 744 public schools throughout the state. The survey response rate for middle schools was 79%, and the survey response rate for high schools was 73%. The FYTS has been conducted annually since 1998. The data presented in this fact sheet are weighted to represent the entire population of public middle and high school students in Florida.

Exposed to SHS in a Room or Car

In 2008, 50.3% of middle school and 58.8% of high school students were exposed to SHS in a room or car in the past week. Since 1998, the prevalence of being exposed to SHS in a room or car decreased by 18.9% among both middle and high school students.



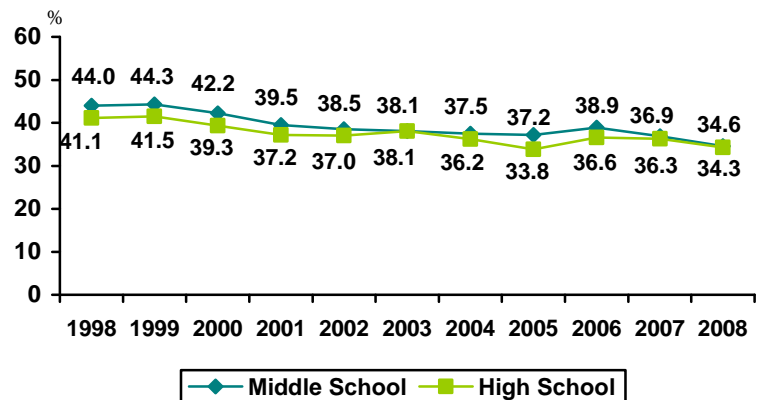
*This question was not asked in 1998.

Smoking Allowed in the Home

In 2008, 13.3% of middle school students and 13.1% of high school students reported that smoking was allowed inside their homes. Since 1999, the prevalence of students reporting that smoking was allowed inside their homes decreased by 53.5% among middle school students and by 50.9% among high school students.

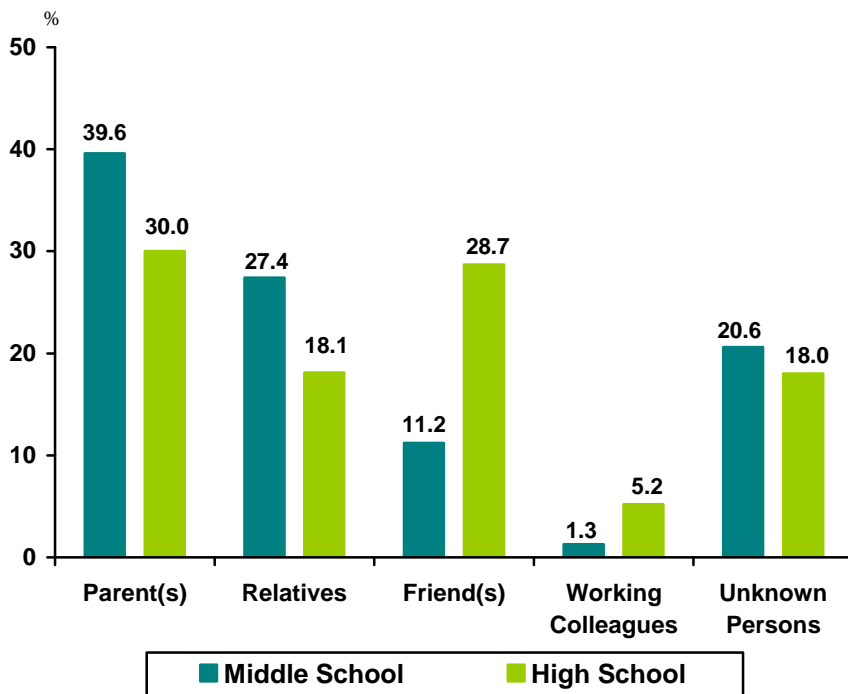
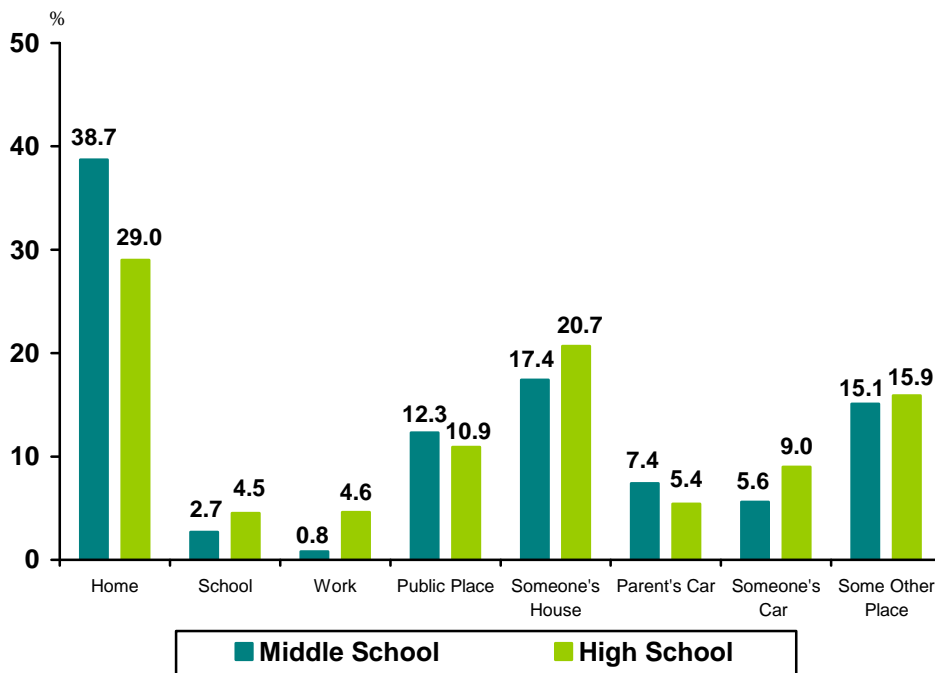
Someone Else Smokes in the Home

In 2008, 34.6% of middle school students and 34.3% of high school students reported that someone else smoked cigarettes in their homes. Since 1998, the prevalence of students reporting that someone else smoked cigarettes in their homes decreased by 21.4% among middle school students and by 16.5% among high school students.



SHS by Location

The majority of students exposed to SHS in middle and high school were exposed to SHS in private places such as their own home or someone else's home. Middle school students had a higher prevalence than high school students of being exposed to SHS in their home or in their parent's car. High school students had a higher prevalence than middle school students of being exposed to SHS in someone else's home or car.



SHS by Source

The majority of students exposed to SHS were exposed to it by someone with whom they have a close relationship. Family members were the most common sources of SHS for middle school students (67.0%). High school students had a higher prevalence than middle school students of being exposed to SHS by a friend (28.7%).

For more information about the FYTS, please contact the Chronic Disease Epidemiology and Surveillance Section, at (850) 245-4401, or by e-mail at ChronicDisease@doh.state.fl.us. You can also visit our website at <http://www.FloridaChronicDisease.org>.

